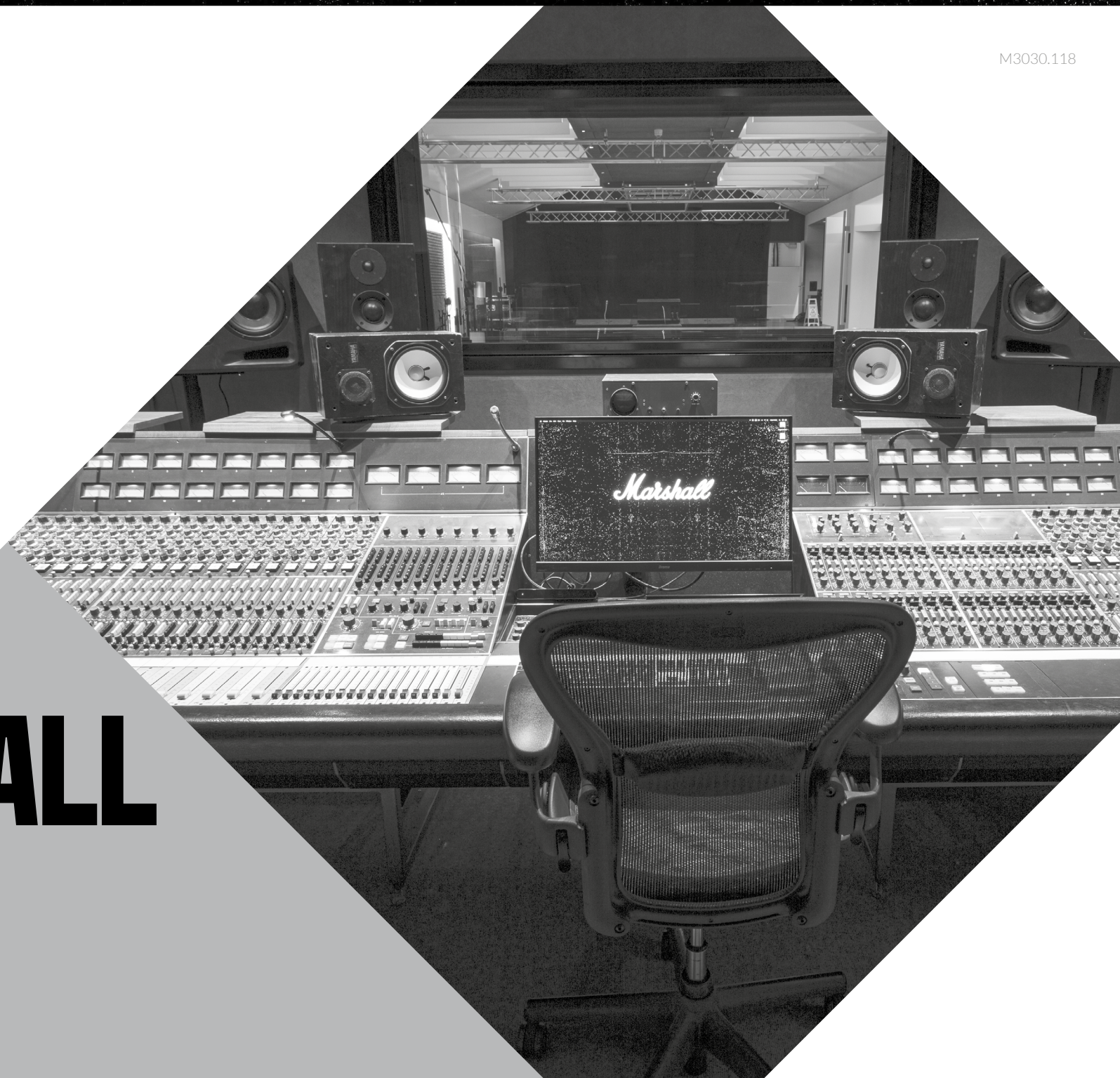


Marshall
STUDIO

M3030.118

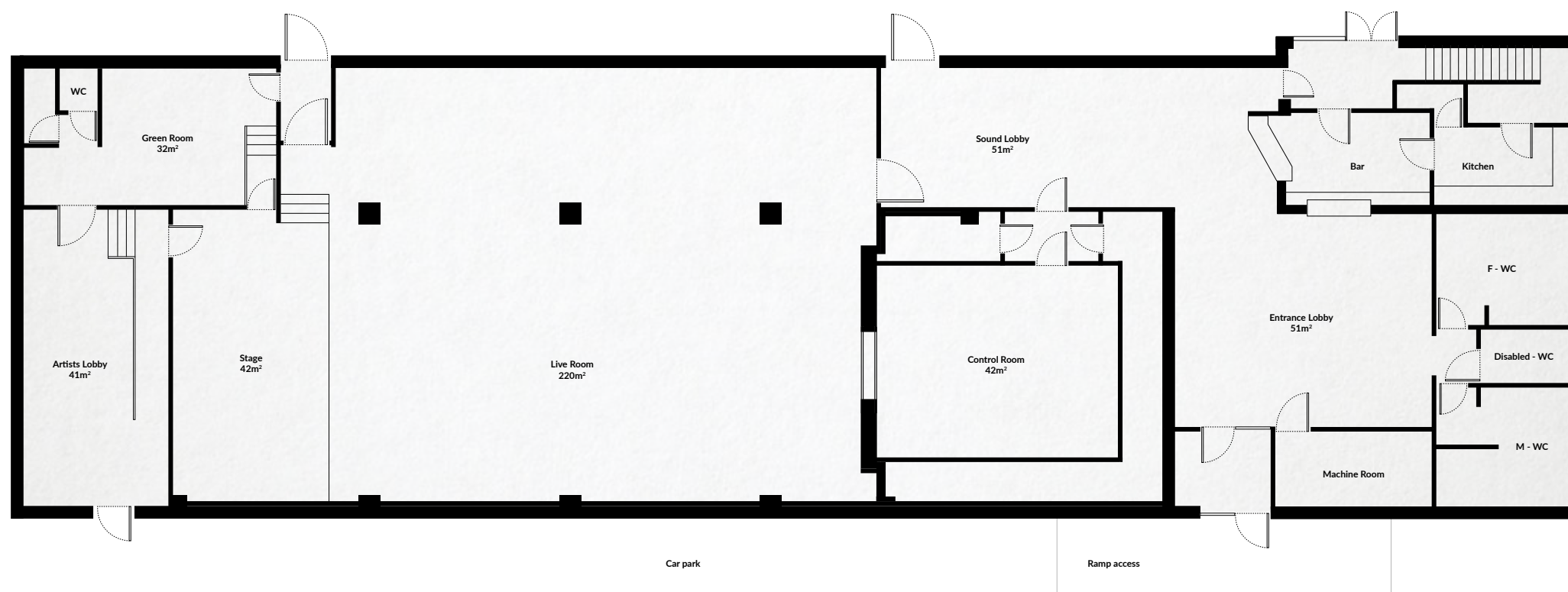
THE MARSHALL STUDIO

MARSHALL.COM



1.0 FLOORPLAN

Located at Marshall HQ, Milton Keynes, the Marshall Studio is a state-of-the-art recording and mixing studio and events space with a live room that can hold up to 250 people. This versatile space is ideal for any recording requirements.



2.0 CONTROL ROOM

DESK

The centrepiece of the Marshall studio is a Neve 8048 console. We record through Focusrite RedNet A/D converters on to the latest version of Protools Ultimate and numerous relay points mean you can record anywhere. Unique features of the desk include:

- 32 x 1093 equalisers built from new motherboard; all transformers and amplifiers are Neve originals.
- 32 x 1948 routing modules rebuilt and modified, and 8 additional units rebuilt and modified for a full channel count of 40.
- Console fitted with 2 x 1066 Channel amps, a 1077 channel amplifier, a 1089 channel amplifier, a 1084 channel amplifier, and 3 x 2065 filter units configured as microphone amplifiers.
- 8 channel section rebuilt with original Neve bussbars and connector rails to take new 1948 routing modules.
- Compression area fitted with a 2254 and 2254E compressor.
- All busses class A, with class A/B parallel outputs.
- Additional patch desk bay frame fitted with 2 x 2264 limiter compressors, 2 x 2081 notch filters, and 4 x 2065 filter modules configured as microphone amplifiers.
- Line amplifiers consist of 34 x rebuilt 1272 class A amplifiers, 2 x 1271 class A amplifiers, 1 x 1278 loudspeaker amplifier, plus 2 pairs of modified 3415 amps for the A/B output.
- Solo circuit modified to be solo 'in place' with stereo solo circuitry added.
- 1-32 channel outputs switchable to monitor section for 32 channel mixdown.
- Newly designed monitoring system fitted to monitor any stereo pair of busses in the console, without using the monitor section.
- Channels 1-24 include switchable pre-EQ insertion points, courtesy of 24 x 3416 line amplifiers: 12 in each rack in the rear of channels 1-24.
- Stereo metering facility included with a pair of Sifam 32AF VU meters, and a pair of Sifam 32 PPM meters with Neve PPM driver boards.
- All VU meters modified for removal of series 3k6 resistors, replaced with trimmers, and calibrated for improved accuracy.
- Modified monitor section so the patch desk bay frame can go straight to monitor section.
- Monitor section channels 1-32, to include their own insert point, _post_ relay switching, to enable any monitor section to be 'locked' with any inserted signal.
- Modified B (main ground) bar increased by addition of a 10mm x 10mm copper bar equivalent to a 169 mm² copper bar;
- Right section of console (channels 25-40) modified to 'mix' onto left section (channels 1-24) via 13 x 1279 amplifiers for the purposes of avoiding very long continuous busses which, in turn, lowers noise floor levels.
- 8 x 1903 buss bounce down modules configured as a separate submixer on the patch desk bay frame; not tied to buss 1-16 per original Neve specification.
- Original Coutant power supplies, with screw- on terminals, replaced with 7 x Neve built 33605 power supplies (plus 2 spares), in 3 x Neve 19" racks under the patch desk bay frame; able to be re-located due to 15 metre power cables.

- Patch desk bay frame (which has been constructed from another Neve console) holding GPO 316 Jackfields for connection to Pro Tools digital audio workstation and a tape machine.

- 15 metre console to patch bay cables.

OUTBOARD AND PROCESSING

- Avid HDX PCIe Card
- DBX 160A (x2)
- Focusrite Rednet A16 (x4)
- Focusrite RedNet AM2 (x6)
- Focusrite RedNet HD32R (x2)
- Smart Research C2
- Universal Audio 1176LN (x2)
- Universal Audio UA LA-2A
- SSL Xlogic Alpha VHD Pre 4 Channel
- Yamaha SPX 990
- Empirical Labs EL8XS (x2)

MONITORING

- Yamaha NS10
- Adam Audio S5H
- Neumann KH120A

We are constantly changing and upgrading our equipment. Please contact us at studio@marshall.com for the latest information.

3.0 EQUIPMENT

MICS, DI'S AND HEADPHONES

- AKG C414 XLII Stereo Set (x2)
- AKG C451 Stereo (x2)
- Beyerdynamic DT-770 PRO 80 ohms (x4)
- BSS AR133 (x4)
- Coles 4038 Pair (x2)
- Coles 4071B Stand adapter (x2)
- EV RE20
- Neumann EA 87 (mounting system)
- Neumann KM184
- Neumann U47 FET
- Neumann U87 (x2)
- Radial JCR Re-amper
- Radial JCR Stereo DI
- Radial Pro DI (x4)
- Royer R-121 (x2)
- Sennheiser e609 (x2)
- Sennheiser e901
- Sennheiser e904 (x4)
- Sennheiser E935 (x2)
- Sennheiser MD421-II (x2)
- Shure Beta 52A (x2)
- Shure Beta 56A (x3)
- Shure Beta 58A (x4)
- Shure Beta 91A
- Shure KSM141
- Shure KSM353
- Shure KSM42
- Shure KSM44a
- Shure KSM8
- Shure SM27
- Shure SM57 (x7)
- Shure SM58 LC (x4)
- Shure SM58 SE
- Shure SM7B
- Shure SRH1540 headphones (x3)
- Shure SRH940-E headphones (x2)
- Telefunken AR-70
- Telefunken TF47
- Telefunken TF51
- Triton Audio FetHead (x4)

AMPS

- 1959HW Head
- 1962 Bluesbreaker Combo
- 1974x Combo
- 1987x PW Combo
- 2555X Head
- Astoria
- AS50D Combo
- Class 5 Head
- Code25 Combo
- DSL40 Combo
- EL34 50/50 Rack amp
- EL34 100/100 Rack amp
- JCM 800 2203 Head
- JMP-1 Head
- JTM 2245 Head
- JVM410H Head

- MG15R Combo
- Origin 20 Head
- SL5 Head
- Studio Classic
- Studio Vintage
- YJM100 Head
- 1960a Cab
- 1960BHW Cab
- 1960BX Cab
- 2551AV Cab
- 2x VBA400
- 1x Marshall DBS 2x12
- Eden WTP

DRUMS

- Natal Cafe Racer Kit - 22", 10", 12", 16"FT
- Natal Maple Original Kit - 22", 12", 14"FT, 16"FT
- 13" x 6.5" Natal Walnut Snare
- 13" x 7" Natal Steel Hammered Snare
- 14" x 5.5" Natal Walnut + Maple Snare
- 14" x 7" Natal Mappa Burl Snare
- Natal percussion
- Zildjian K Cymbals

INSTRUMENTS

- Fender Stratocaster Ultra HSS
- Fender Ultra Jazz bass
- Gibson Les Paul Standard 50's
- Yamaha FG
- Tanglewood Banjo
- Extensive range of guitar pedals

Any additional equipment requirements can be catered for on request.

We are constantly changing and upgrading our equipment. Please contact us at studio@marshall.com for the latest information.

MARSHALL.COM





**MARSHALL AMPLIFICATION PLC,
DENBIGH ROAD,
BLETCHLEY, MILTON KEYNES,
MK1 1DQ, ENGLAND.**

T: +44 (0) 1908 375411

STUDIO@MARSHALL.COM

**MARSHALL AMPLIFICATION PLC
REGISTERED IN ENGLAND
REGISTERED NUMBER: 805676**

MARSHALL.COM